



STEPS FOR SUCCESS WITH THE LICEL 1-2-3 LICE CONTROL SYSTEM LICE CONTROL FOR YOUR FAMILY AND HOME

STEP 1 TREAT



DIRECTIONS:

Inspect

- Check each household member with a magnifying glass in bright light for lice/nits (eggs).
- Look for tiny nits near scalp, beginning at back of neck and behind ears.
- Examine small sections of hair at a time.
- Unlike dandruff which moves when touched, nits stick to the hair.
- If either lice or nits are found, treat with Licel Lice Killer.

NOTE:

- Apply "Licel" thoroughly to **DRY HAIR** or other affected area.
- Wetting the hair dilutes the treatment making it less effective.
- For head lice, thoroughly massage oil into scalp, behind the ears and to the back of the neck. Lice can crawl up and down the shaft of the hair very quickly so it is important to apply the treatment from the roots to the ends of the hair.
- Allow product to remain on hair overnight.
- Wash area thoroughly with warm water and shampoo or soap.
- For head lice, towel dry hair and comb out tangles
- Proceed to Step 2.
- A second treatment must be done in 7 to 10 days to kill any newly hatched lice if required.

Usage Guidelines

Hair Length	Approximate Amount for 1 Adult/Child :
Short (ear length or shorter)	First Application : 5 - 10 ml Second Application : 5 - 10 ml Total : 10 - 20 ml
Medium (shoulder length)	First Application : 15 - 20 ml Second Application : 15 - 20 ml Total : 30 - 40 ml
Long (past shoulder length)	First Application : 20 - 30 ml Second Application : 20 - 30 ml Total : 40 - 60 ml

STEP 2 REMOVE



NOTE :

- A fine-tooth comb or a special lice/nit removing comb must be used to remove lice, eggs and nits from hair.
- Find a distraction for your child. (ex. books, TV or games)
- Comb out hair with a regular wide-tooth comb to take out snarls and tangles.
- When combing, use the fine - tooth lice/nit comb and make sure the teeth are facing you.
- Part hair into section. Do one section at a time. Starting on top of the head.
- Lift a 1-2 inch wide strand of hair. Place comb as close to scalp as possible and comb with a firm, even motion away from scalp.
- Always comb away from the head.
- Pin back each strand of hair after combing.
- After combing, thoroughly recheck for lice/nits. Repeat combing if necessary.
- After you have combed and pinned the entire head, remove all bobby pins or hair clips and thoroughly recheck for lice/nits. Repeat combing if necessary.
- Rinse hair thoroughly with warm water. If desired, you may also wash with regular shampoo.
- A second treatment must be done in 7 to 10 days to kill any newly hatched lice if any.
- **For Children Below Two Years**, mix one cap of Licel with same Quantity of coconut oil and then apply

STEP 3 CONTROL



- Head lice lay small white eggs (nits) on the hair shaft close to the scalp.
- Nits are most easily found on the back of the neck or behind the ears.
- Disinfect hats, hair ribbons, scarves, coats, towels and bed linens by machine washing in hot water (above 54°C), then using the hottest dryer cycle for at least 20 minutes.
- Items that cannot be washed, dry-cleaned, or stored may be sprayed with a product designed for this purpose.
- Soak all combs and brushes in water (above 54° C for at least 10 minutes.
- Vacuum all carpets, mattresses, upholstered furniture, and car seats that may have been used by affected people.

CHECKLIST

- Home and auto upholstery
- Pillows, pillowcases, mattresses
- Bed Linen
- Towels
- Stuffed Animals and Toys
- Hats
- Headphones
- Headbands
- Bike/sports helmets
- Coats, gloves, scarves, earmuffs
- Play mats
- Clothing
- Ballets / Hair Accessories
- Hair rollers
- Combs and brushes
- Caps

DAILY CHECKING



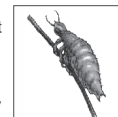
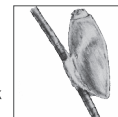
TO PREVENT REINFESTATION :

- Carefully inspect affected family member **daily** for at least 2 weeks. If you see eggs or nits, repeat Step 2.
- Check other family members for Head Lice. If anyone in the family is infested, follow Step 1 and Step 2. Repeat Step 3 with any articles or items which they have come into contact.

Did you know?

Head Lice

- Head lice lay small white eggs (nits) on hair shaft close to the scalp.
- Nits are most easily found on back of neck or behind ears.
- Disinfect hats, hair ribbons, scarves, coats, towels and bed linens by machine washing in hot water (above 54°C (130°F)), then using hottest dryer cycle for at least 20 minutes.
- Items that cannot be washed (bedspreads, blankets, pillows, stuffed toys, etc.) should be dry-cleaned or sealed in a plastic bag for 4 weeks, then removed outdoors and shaken out very hard before using again.
- Items that cannot be washed, dry-cleaned, or stored may be sprayed with a product designed for this purpose.
- Soak all combs and brushes in hot water (above 54°C (130°F)) for at least 10 minutes.
- Vacuum all carpets, mattresses, upholstered furniture, and car seats that may have been used by affected people.



Pubic (Crab) Lice

- Pubic Lice may be transmitted by sexual contact. Sexual partners should be treated simultaneously to avoid reinfestation.
- Pubic Lice are very small and look like brown or grey dots on skin.
- Pubic Lice usually cause intense itching and lay small white eggs (nits) on the hair shaft generally close to the skin surface.
- Pubic Lice may be present on the short hairs of groin, thighs, trunk and underarms and occasionally on the beard and mustache.
- Pubic Lice infested underwear can be disinfected by machine washing in hot water (above 54°C (130°F)), then using hottest dryer cycle for at least 20 minutes.

Body Lice

- Body Lice and their eggs (nits) are generally found in the seams of clothing particularly in the waistline and armpit area.
- Body Lice feed on skin then return to clothing to lay their eggs.
- Body Lice infested clothing can be disinfected by machine washing in hot water (above 54°C (130°F)), then using hottest dryer cycle for at least 20 minutes.
- Body Lice nits can remain dormant for up to 30 days and therefore clothing should not be sealed in a plastic bag.
- **Save this package insert for future reference.**
